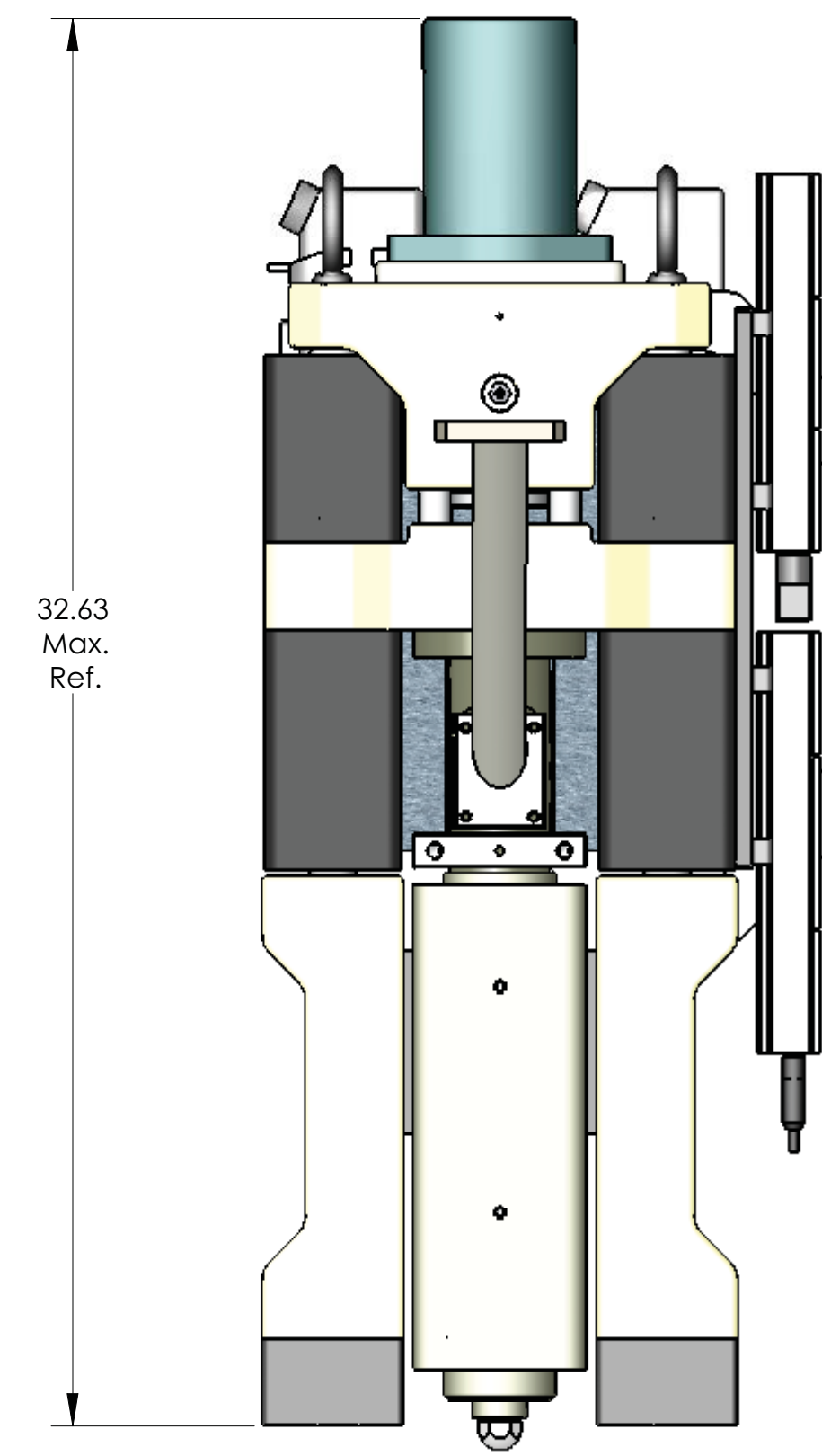
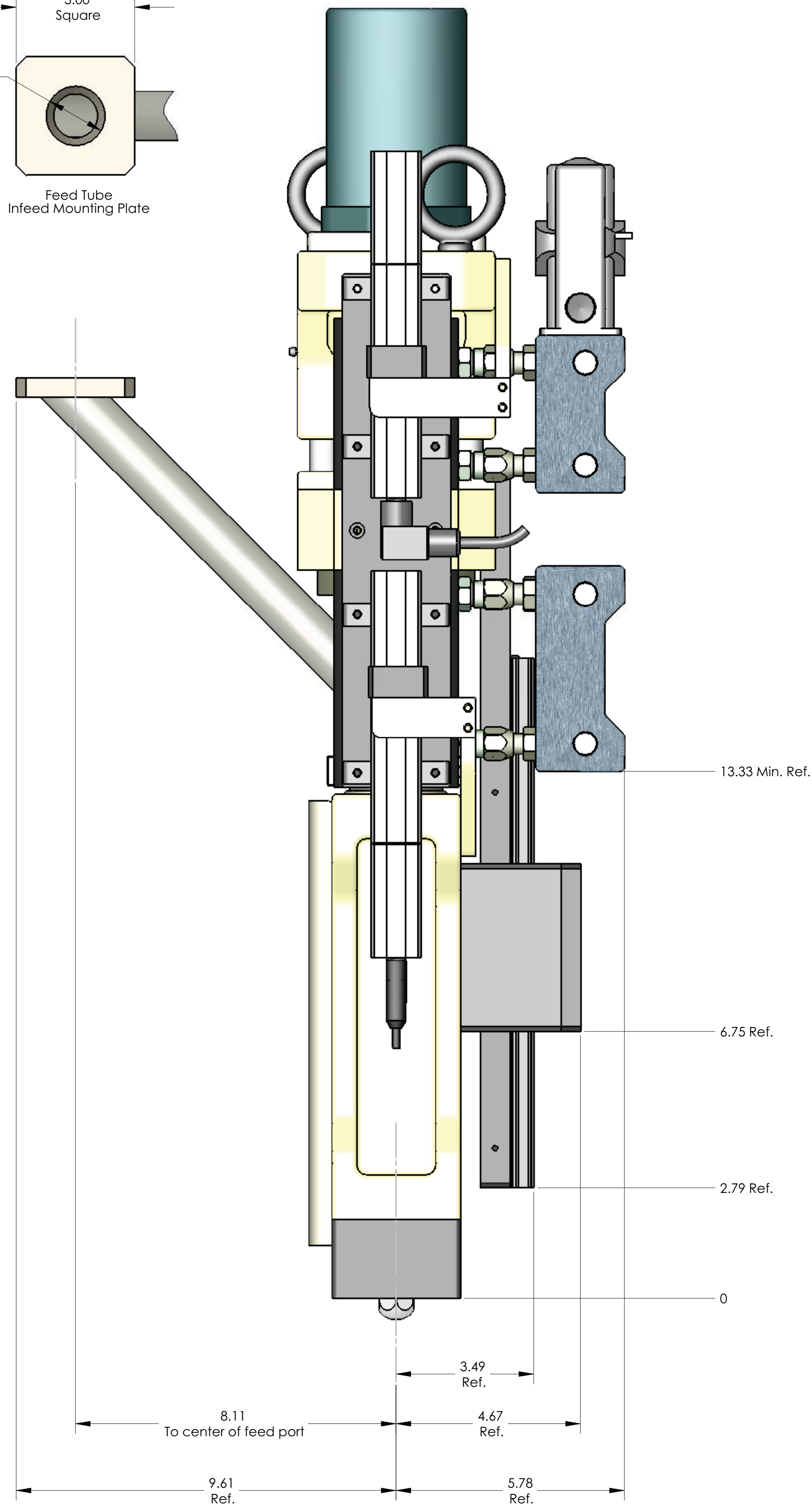
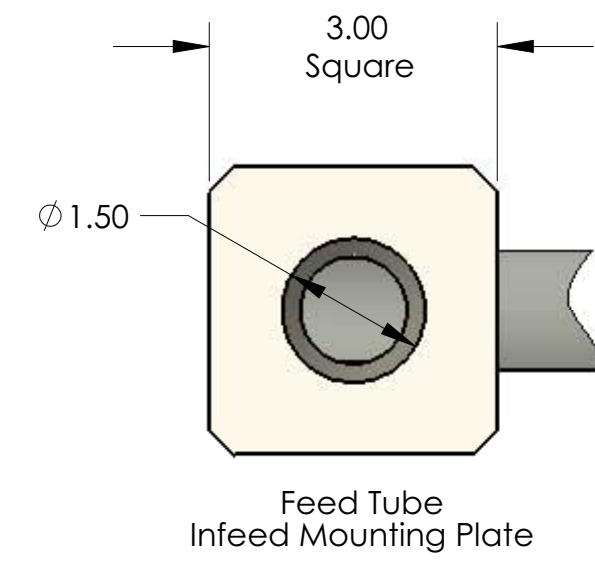
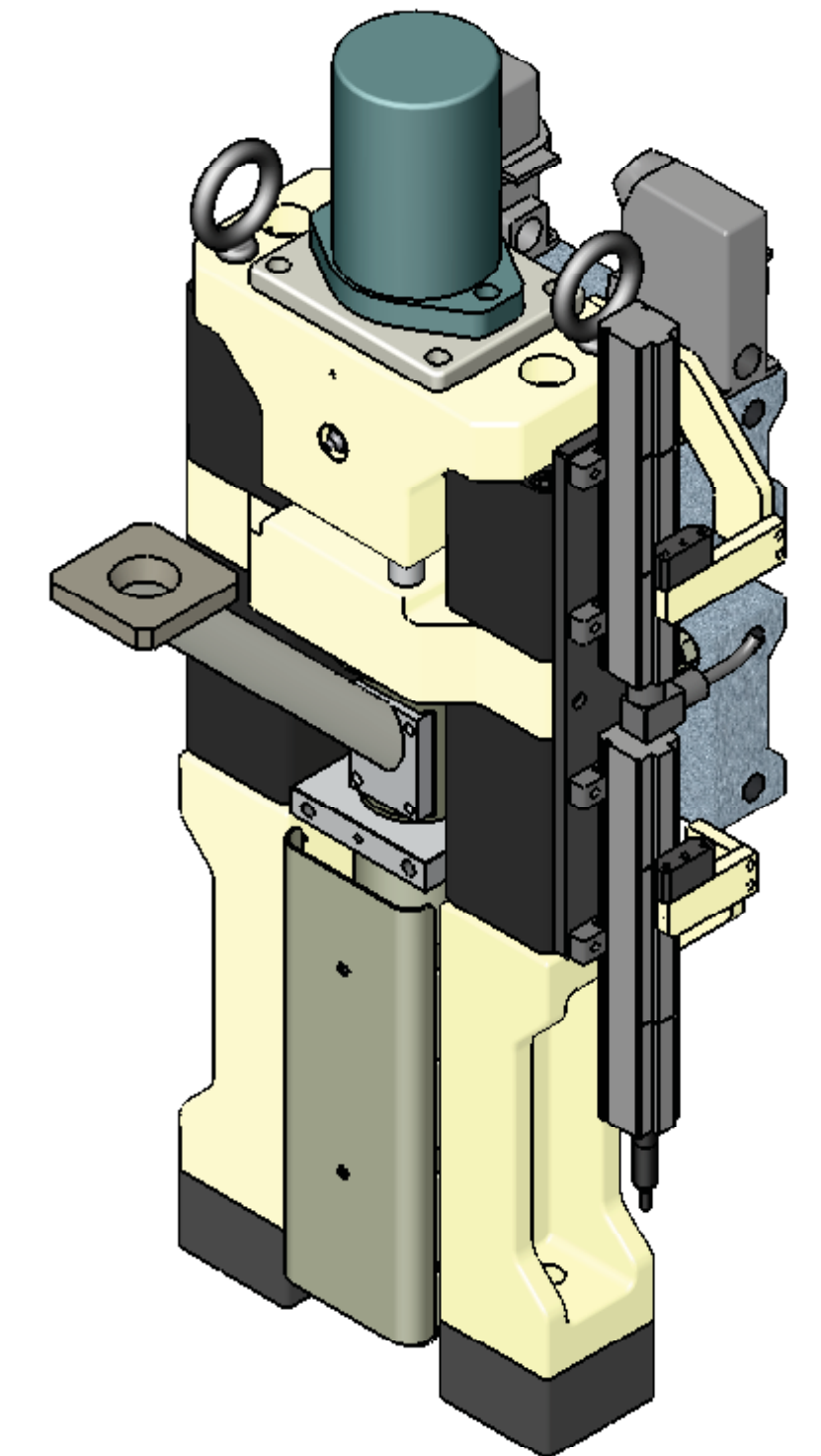


Fully Retracted



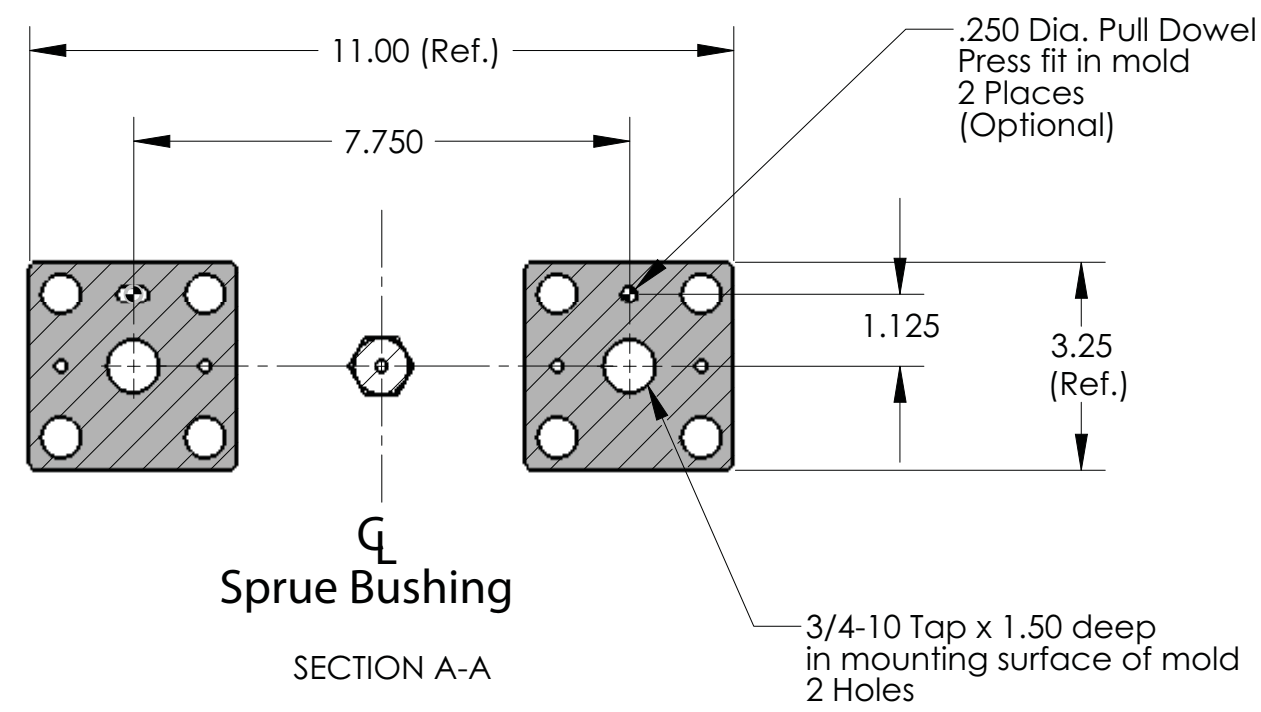
Fully Extended (Max. Height)



UMS Portable Injection Units U.S. Patent 6,994,810 B2

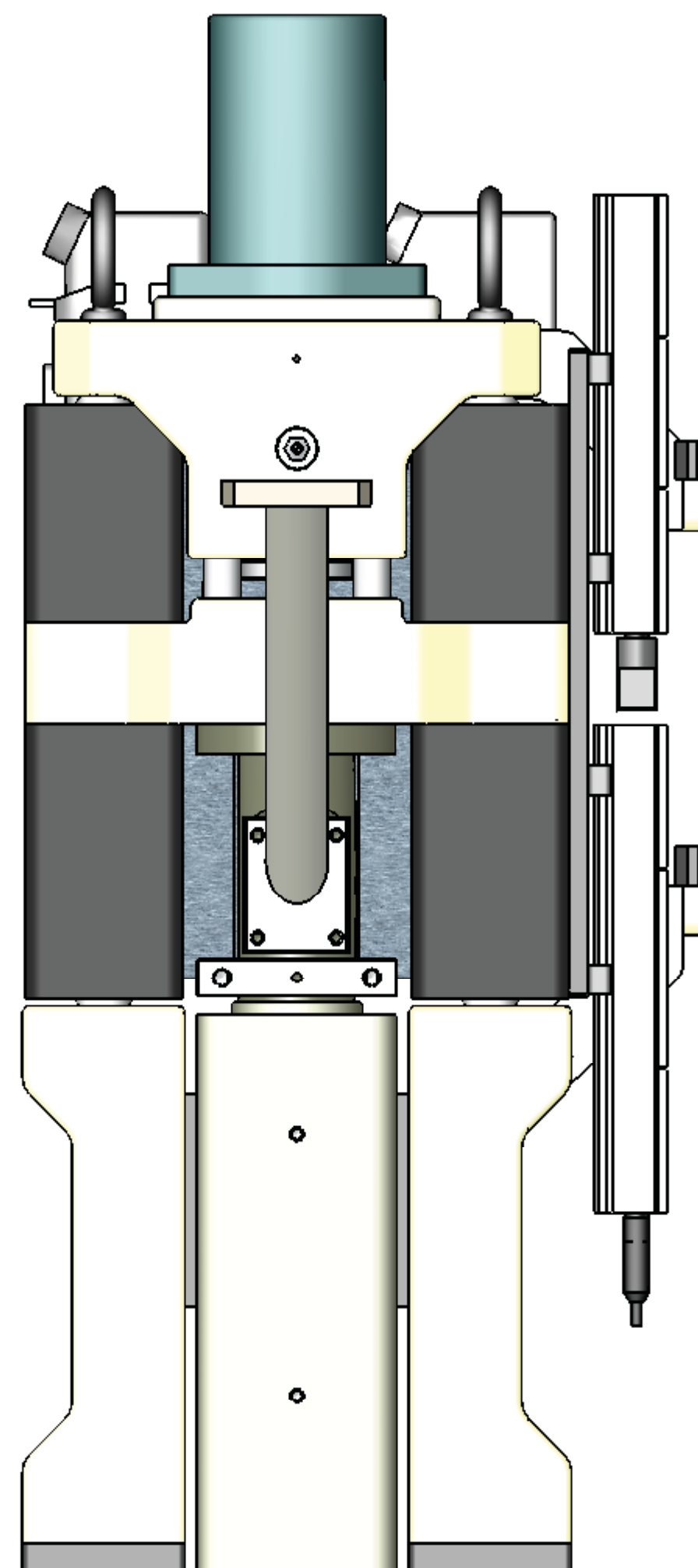
W188 N11707 Maple Road  
 Germantown, WI 53022 USA  
 Phone: (262) 255-5790  
 Fax: (262) 255-7206  
 E-Mail: [contact@mgstech.com](mailto:contact@mgstech.com)

[www.mgstech.com](http://www.mgstech.com)  
[www.multishot.com](http://www.multishot.com)

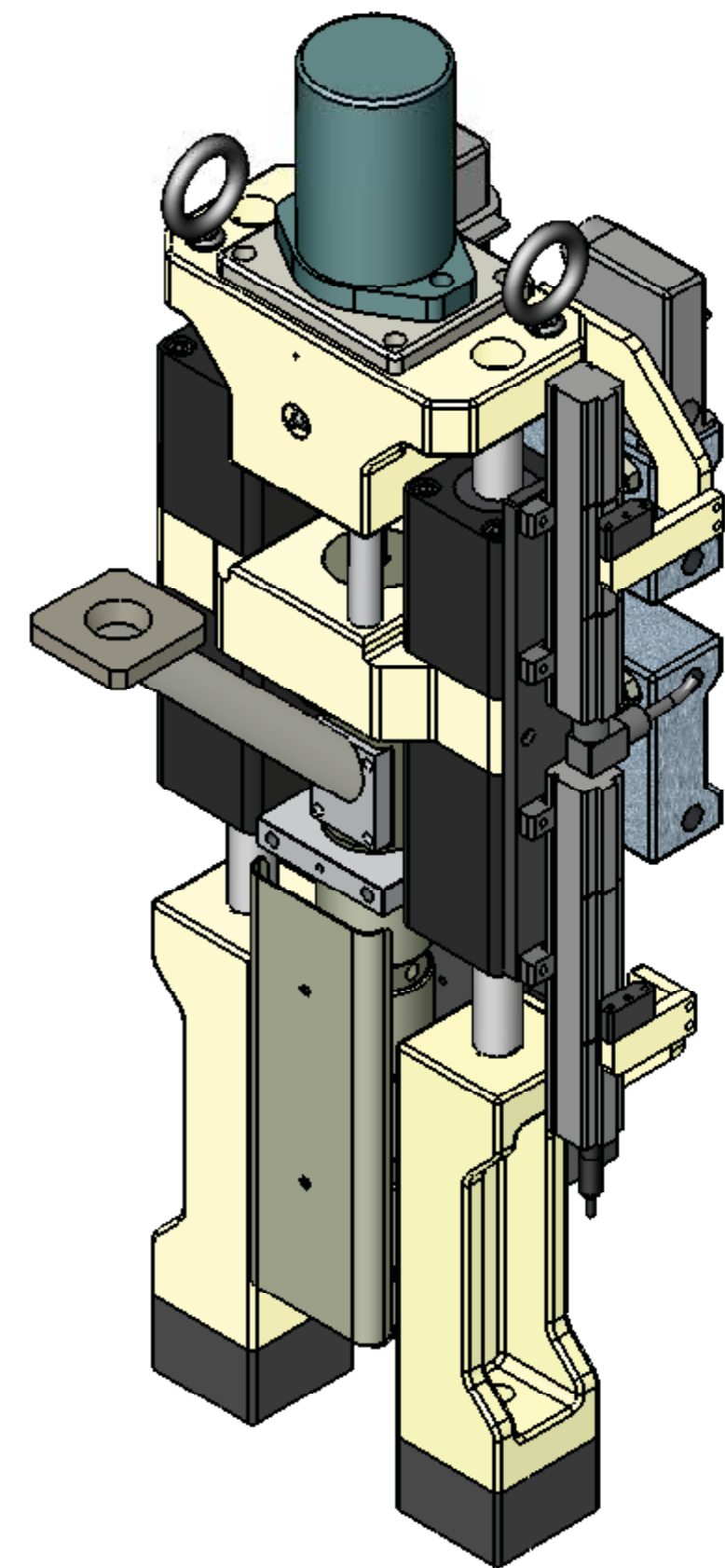


Mounting Hole Pattern  
Option #1  
For injecting behind parting line

Option #1 requires the sprue bushing to be located a minimum of 1.625" from the parting line.



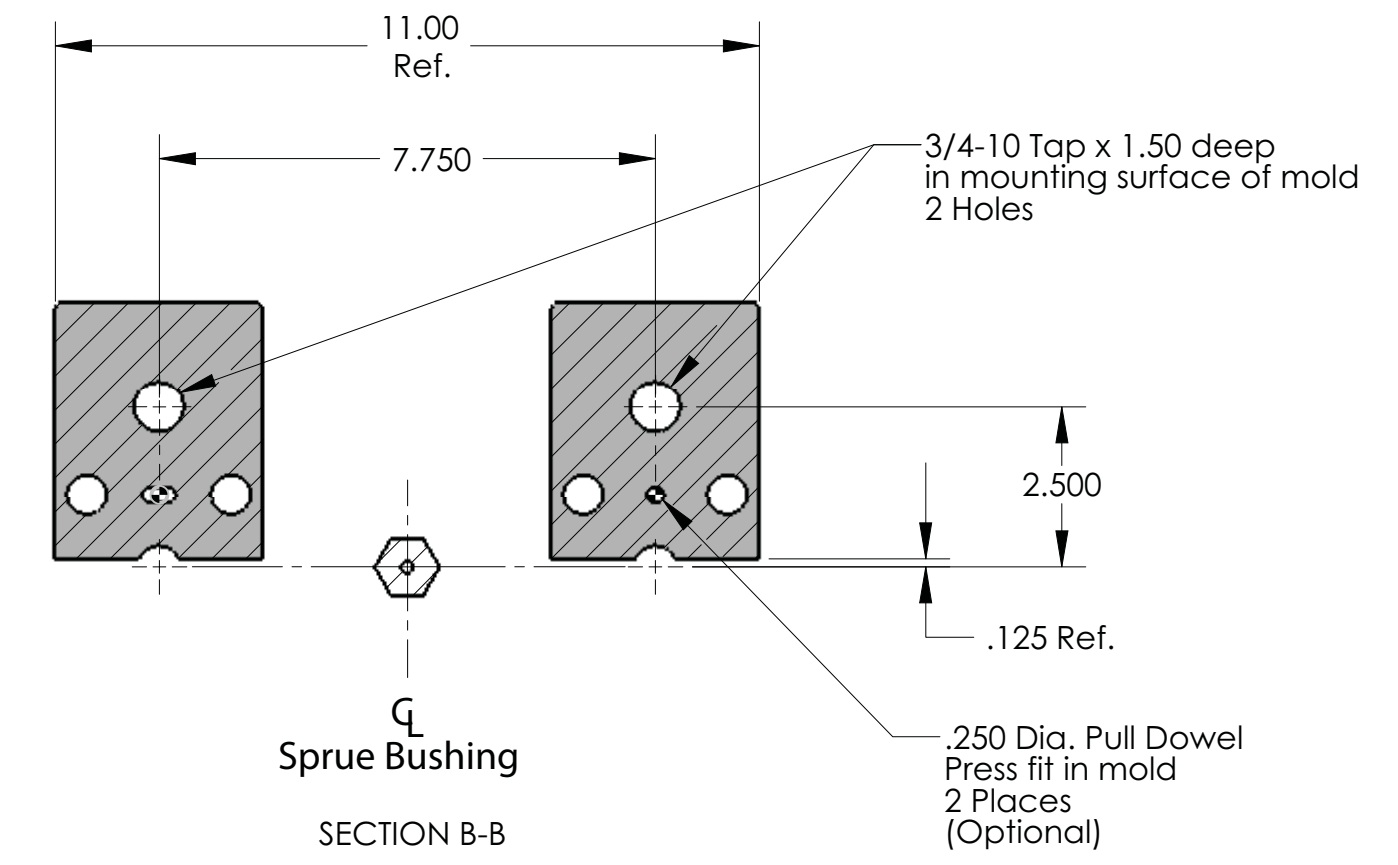
### MOUNTING OPTION 1



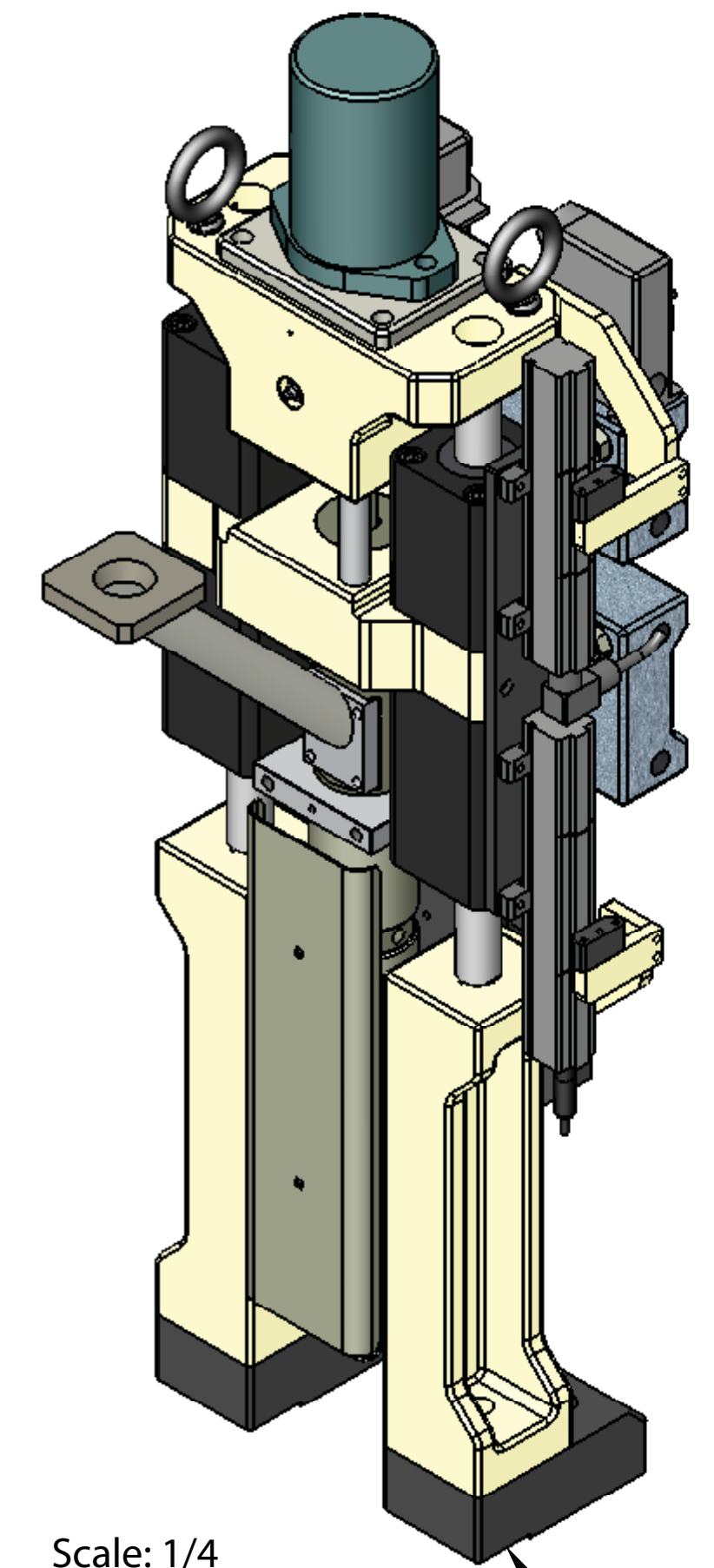
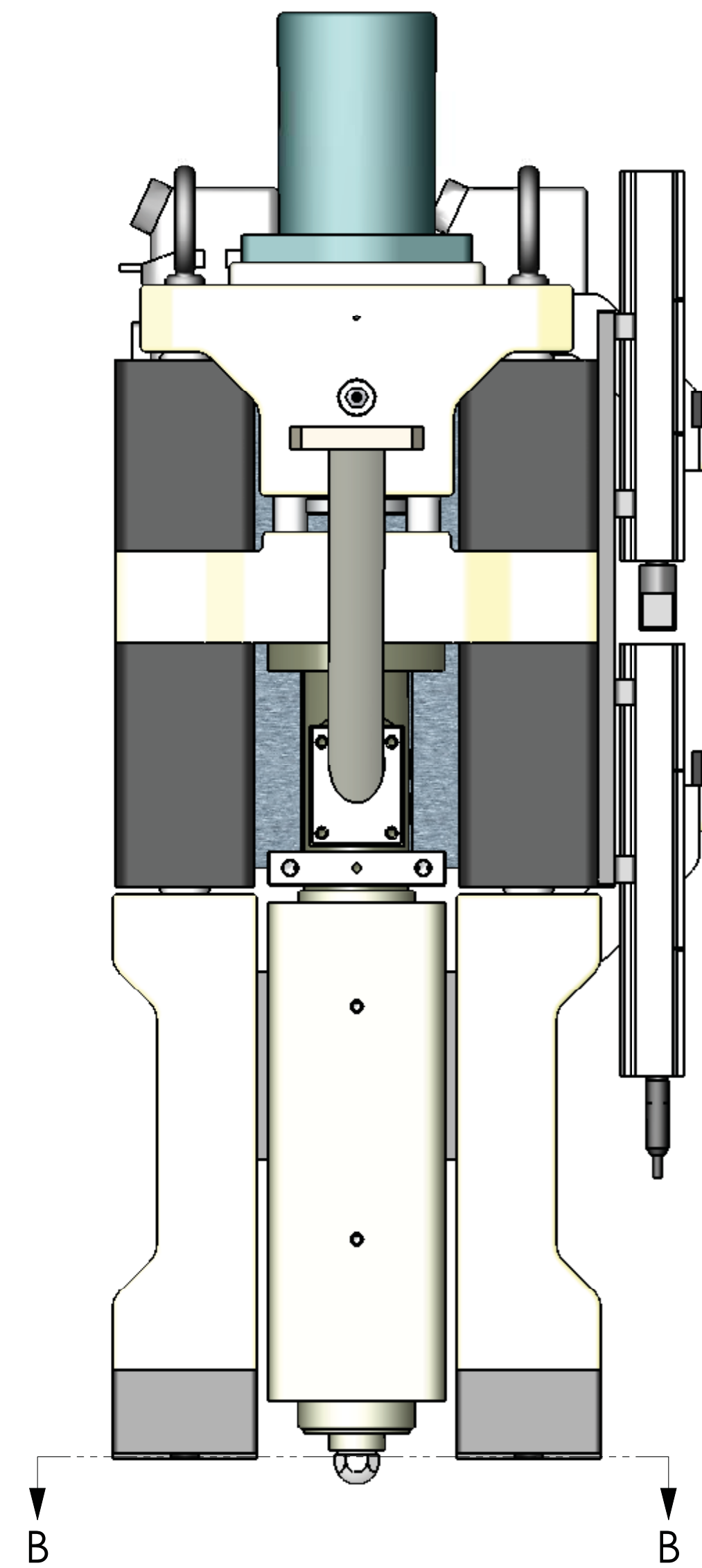
Scale: 1/4

Standard riser shown.  
Optional riser designs can be provided to accommodate shutoff nozzles, filter packs, or custom applications. Consult MGS for details.

### MOUNTING OPTION 2



Mounting Hole Pattern  
Option #2  
Recommended for injecting on parting line



Scale: 1/4



UMS Portable Injection Units U.S. Patent 6,994,810 B2

W188 N11707 Maple Road  
Germantown, WI 53022 USA  
Phone: (262) 255-5790  
Fax: (262) 255-7206  
E-Mail: contact@mgstech.com

www.mgstech.com  
www.multishot.com